

# How Artificial Intelligence Can Support Healthcare



**Elena Sügis, PhD**

Terviseinformaatika lektor / Tartu Ülikool

[elena.sugis@ut.ee](mailto:elena.sugis@ut.ee)



TARTU ÜLIKOOL  
arvutiteaduse instituut



umcg



UNIVERSITY  
OF TARTU



university of  
 groningen



University of Cologne

UNIVERSITY OF  
COPENHAGEN

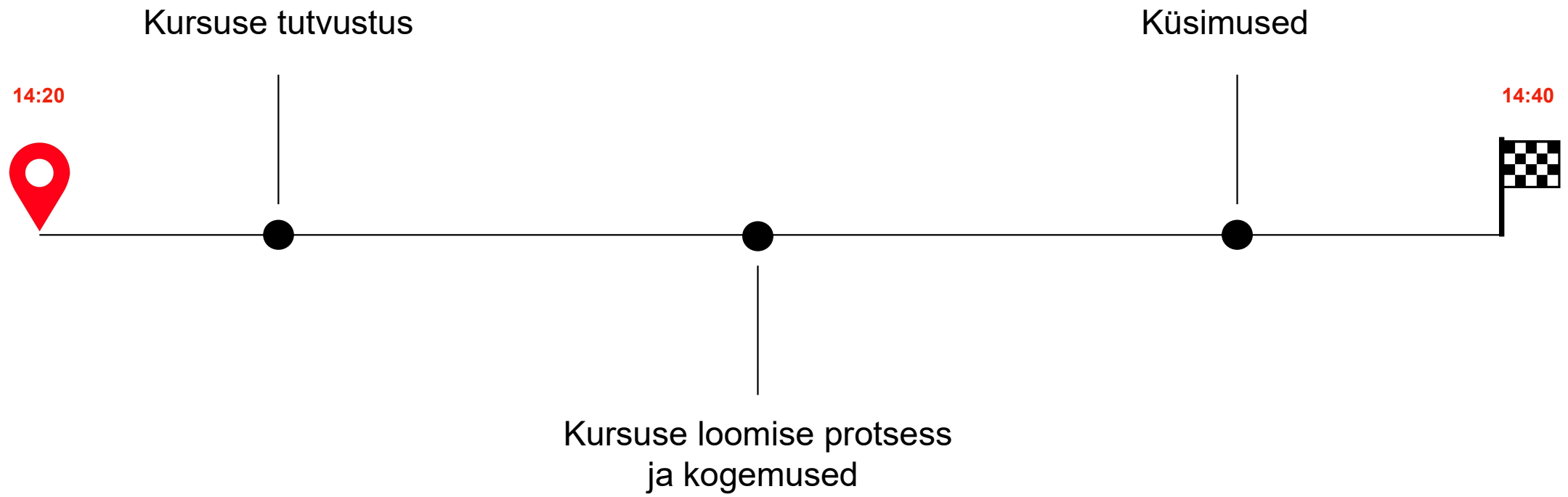


Funded by the  
European Union











# Teemad



# AIProHealth MOOC


Online Courses / Healthcare & Medicine

 university of groningen  UNIVERSITY OF TARTU     UNIKLINIK KÖLN

## How Artificial Intelligence Can Support Healthcare

Explore how AI can be used to improve patient care and build your understanding of how to implement AI in the health professions.

★★★★★ 4.6 (16 reviews) 2,238 enrolled on this course



How Artificial Intelligence Can Support Healthcare

★★★★★ 4.6 (16 reviews)

2,238 enrolled on this course

4 weeks

4 hours per week

Digital certificate when eligible

Intermediate level


Join course

Find out more about how to join this course

**ARTIQ**

**mediaire**

**eit** Health

Funded by the European Union 



veebipõhine  
vaba juurdepääsuga



4 nädalat



inglise keeles



platvorm

# AIProHealth MOOC

# Öppejõud

Online Courses / Healthcare & Medicine



## How Artificial Intelligence Can Support Healthcare

Explore how AI can be used to improve patient care and build your understanding of how to implement AI in the health professions.

★★★★☆ 4.6 (16 reviews) 2,238 enrolled on this course



### How Artificial Intelligence Can Support Healthcare

★★★★☆ 4.6 (16 reviews)

2,238 enrolled on this course

⌚ 4 weeks

🕒 4 hours per week

📄 Digital certificate when eligible

📊 Intermediate level

Join course

Find out more about how to join this course

ARTIQ

mediaire



Funded by the European Union



**Peter van Ooijen**

Associate Professor Imaging Informatics at dept. of Radiotherapy and coordinator of the Machine Learning Lab of DASH both at the University Medical Center Groningen.



**Elena Sügis**

Data Science & AI educator and biomedical data scientist. Assistant Professor of Health Informatics at the Institute of Computer Science, University of Tartu



**Rosa Verhoeven**

MSc Artificial Intelligence and Human-Machine Communication. Content developer AIProHealth at the Data Science Center in Health of the University Medical Center Groningen.



**Daniel Pinto dos Santos**

I am an Assistant Professor of Radiology at the University Hospital of Cologne. In my research I focus on the advancement of data driven approaches in radiology - from structured reporting to AI.



**Michael Petr**

Biomedical engineer, PhD in aging, and postdoc at University of Copenhagen. Co-founder and CEO of Tracked.bio.

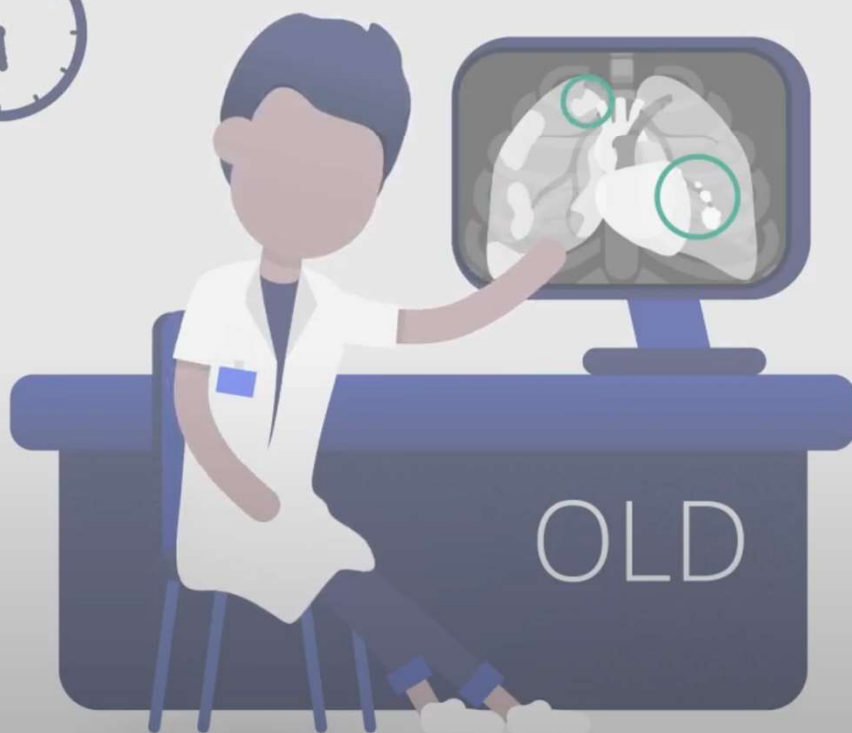


# Tehisintellekti potentsiaal tervishoius

ülesannete automatiseerimine

parem tervishoiuteenus

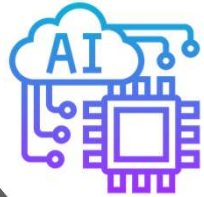
kiiremad ja täpsemad diagnoosid





# Õppevajadused

Tehisintellekti  
mudelite arendamine



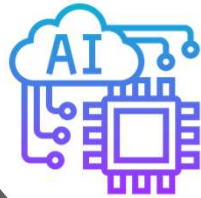
Kasutamine kliinilises  
keskkonnas





# Õppevajadused

Tehisintellekti  
mudelite arendamine



teadmised

oskused



Kasutamine kliinilises  
keskkonnas

# Sihtrühm



osalemine ei eelda varasemaid teadmisi või kogemusi tehisintellektiga



# Eesmärk

Kuidas teha  
kaalutletud ja eetilisi otsuseid  
tehisintellekti kasutamisel  
igapäevatoos?



teoreetiline ja praktiline info  
tehisintellekti võimaluste  
ja piirangute osas



# Õpiväljundid

oskab **selgitada** tehisintellekti **põhimõisteid** ja selle **kasutamist** tervishoiu valdkonna **kasutusjuhtudel**



oskab **kirjeldada** tehisintellekti **rakendamise mõju** kliinilises keskkonnas

oskab **tuvastada** tehisintellekti **rakendamise nõuded** kliinilises keskkonnas

oskab **hinnata** tehisintellektiga seotud **väljakutseid ja riske** tervishoius

suudab **arutleda** tehisintellekti ja selle **kasutamise üle tervishoius** praktilisel ja sisukal viisil

# Õppekava

Week 1

**Potential and limitations of AI in healthcare**

[Show weekly breakdown](#) ▾



4t nädalas

Week 2

**Tackling the technical and regulatory challenges of AI**

[Show weekly breakdown](#) ▾



iseseisev õppevorm

Week 3

**Ethical and social aspects of AI in healthcare**

[Show weekly breakdown](#) ▾

Week 4

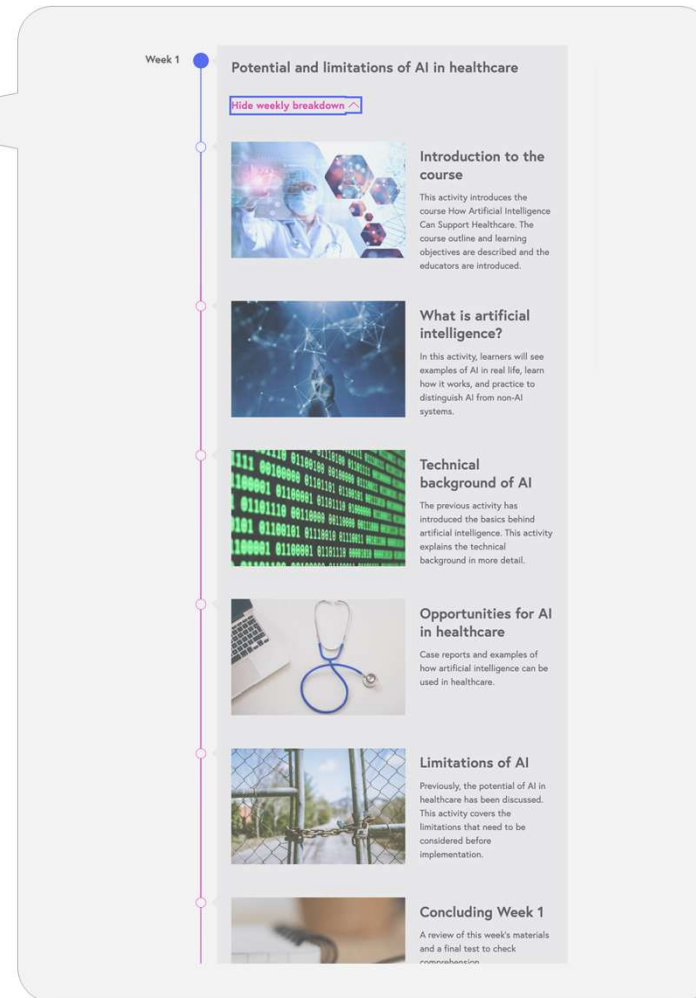
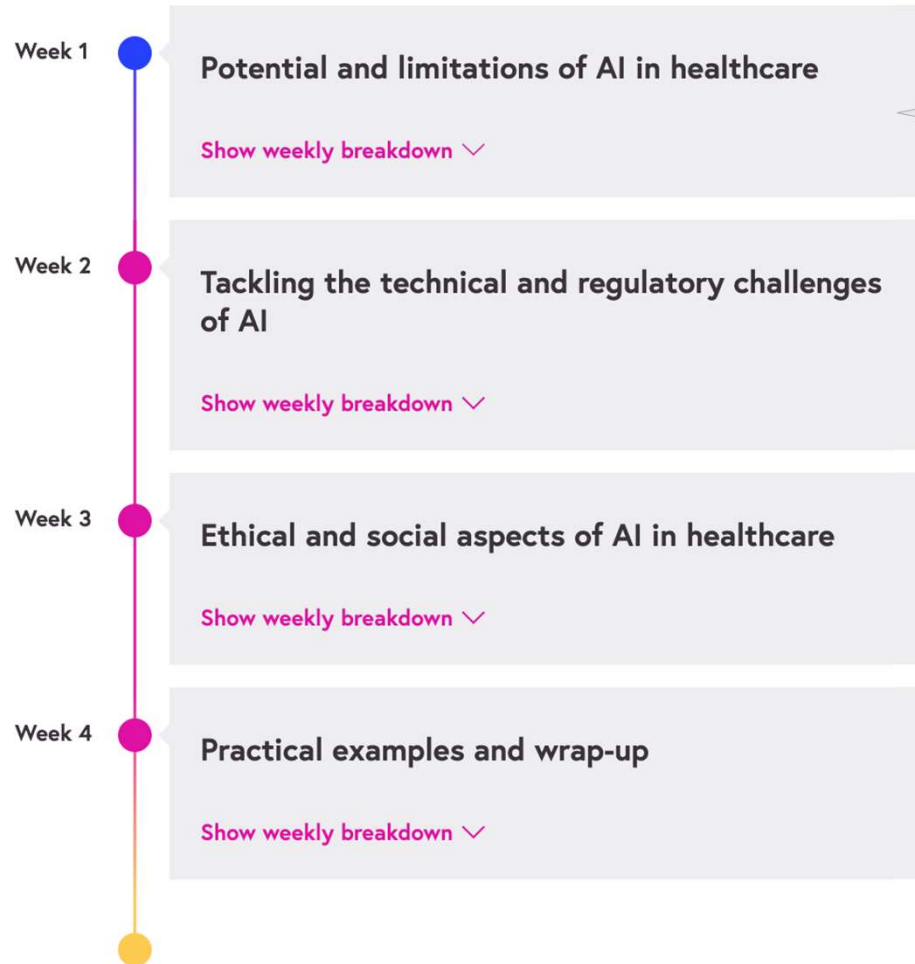
**Practical examples and wrap-up**

[Show weekly breakdown](#) ▾



selged õpijuhised ja  
töökorraldused

# Nädal 1 näide



# Automaatsed meeldetuletused ja kutsed õppima



**Hello Elena,**

We're missing you on **How Artificial Intelligence Can Support Healthcare**, so we thought we'd share a few tips to help you start the course.

**Don't worry about how much you know**

FutureLearn is designed for people with all levels of experience – you don't need to be an expert to join in.

**Look at what other people are saying**

Not sure about the subject? Throughout the course you can ask for help from other learners or the educators if you get stuck.

**Do the whole course step by step**

You don't need to do a lot of work in one go – you can learn out. Spend half an hour getting to grips with today, then come back for more.

[Start your course now](#)

[Go to Week 2](#)

**Hello Elena,**

Welcome to Week 2 of **How Artificial Intelligence Can Support Healthcare**.

[Go to Week 3](#)

**Hello Elena,**

Welcome to Week 3 of **How Artificial Intelligence Can Support Healthcare**.

[Go to Week 3](#)

We're already at Week 3 of the **How Artificial Intelligence Can Support Healthcare** course! This week, we will look at the ethical and social aspects of AI in healthcare using a similar setup as in Week 2. We will provide you with the different views and opinions of a variety of stakeholders.

The topics discussed in this week are especially prone to interpretation and views can differ greatly. Therefore, as in the previous weeks, we encourage you to take part in the discussion and **learn** from us and each other. We are looking forward to seeing active discussions again, and we will be sure to join the discussion ourselves as well.

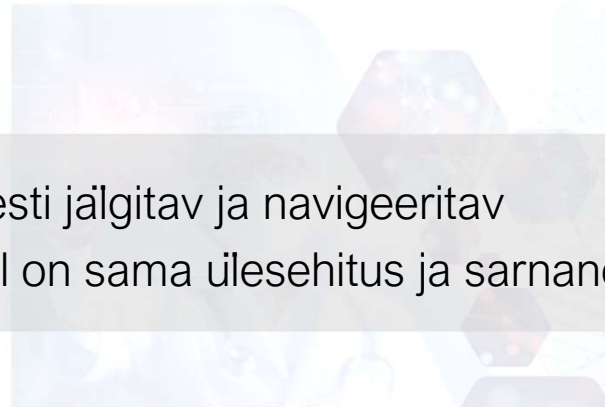
Keep your comments coming, we really appreciate all the feedback we get!

Do you like this course? Please share it with colleagues, friends and family. They can start learning straight away!

# Ülesehitus

15

You've completed 7 steps in Week 1



AIProHealth

## Welcome to the course

94 comments

### Welcome to the course How Artificial Intelligence Can Support Healthcare!

In the upcoming four weeks, you will learn how artificial intelligence can be implemented in the health professions in order to improve patient care.

Each week, different aspects will be covered relevant to this implementation:

Support

✓ Step completed

Next: >

Previous <

#### WEEK 1 Potential and limitations of AI in health...

- Introduction to the course >
- What is artificial intelligence? >
- Technical background of AI >
- Opportunities for AI in healthcare >
- Limitations of AI >
- Concluding Week 1 >

#### WEEK 2 Tackling the technical and regulatory c...

- Introduction Week 2 >
- Trustworthy AI >
- Explainable AI >
- Clinical Products and Services using AI >
- Concluding Week 2 >

#### WEEK 3 Ethical and social aspects of AI in health...

- Introduction Week 3 >
- Ethical concerns >
- Dealing with ethical concerns >
- Interaction between AI and healthcare profes... >
- Patients interacting with AI >
- Can we trust AI? >
- Future perspectives >
- Concluding Week 3 >

#### WEEK 4 Practical examples and wrap-up

- Introduction Week 4 >
- Manager's perspective >
- IT perspective >
- Healthcare professional perspective >
- Patient perspective >
- Making a choice >
- Concluding Week 4 >

- Kursus on kergesti jälgitav ja navigeeritav
- Igal õppenädalal on sama ülesehitus ja sarnane õpperütm



# Õppematerjalid ja tegevused

1.13

You've completed 1 step in Week 1



WHO guidance on Ethics & Governance of Artificial Intelligence for Health

© WHO

## Potential of AI in healthcare

20 comments

Now that you have already thought about the applications of artificial intelligence in healthcare yourself, let's go over the main domains in which AI can be utilised. In this section we will rely on [WHO guidance on Ethics & Governance of Artificial Intelligence for Health](#) and summarise the major applications of AI in healthcare where it demonstrates promising potential.

### Diagnosis and prediction-based diagnosis

Although not yet routinely used in clinical practice, AI systems

Tekstid, pildid

2.6

You've completed 1 step in Week 2



[View transcript](#)

Download video: [standard](#) or [HD](#)

## Bias in AI

8 comments

One of the seven requirements for reaching trustworthy AI is the application of diversity, non-discrimination, and fairness. In order to meet this requirement, bias should be avoided.

In this video, lead educator [Elena Sügis](#) introduces the topic of bias and displays the results of a study in which the effects of bias were examined.

Videod

4.6

You've completed 0 steps in Week 4



[View transcript](#)

Download video: [standard](#) or [HD](#)

## Meeting the head of the IT department

9 comments

The first stakeholder Lisa has to approach is her IT expert Lucas. Let's see what kind of requirements he considers important for the implementation of the AI solution in their clinical practice.

Lisa uses the ECLAIR guidelines to ask goal-directed questions to Lucas. Of course, Lucas has a lot of knowledge on the topic, so he can easily help her to fill in the matrix.

Animatsioonid

# Videomaterjalid

2.6

You've completed 1 step in Week 2



subtiitrid

Close transcript

Download video: **standard** or **HD**

0:06

ELENA SÜGIS: A central motivation for using AI systems in health care is to advance patient care by reducing human error and to improve the accuracy of diagnoses and clinical decisions. There is, however, also rising awareness about bias in AI technology and the potentially harmful effects. It is important to mention at this point that strictly speaking, biases in AI are not only caused by technical problems, that can be solved by technological means. It has been also shown that human bias, such as gender and racial bias can be inherited by AI systems. For example, face recognition systems have been shown to misclassify darker skinned females exhibiting gender and ethnicity bias.

0:57

According to the ethical guidelines for trustworthy AI, technical robustness and safety, along with diversity, non-discrimination, and fairness, has to be ensured, while unfair bias has to be avoided.

video transkriptsioon

Support

< Previous

✓ Mark as complete

Next >

WEEK 1

Potential and limitations of AI in health...

WEEK 2

Tackling the technical and regulatory c...

Introduction Week 2

Trustworthy AI

2.4 What do you consider to be trustworthy AI?

Discussion

2.5 European approach to trustworthy AI

Article

2.6 Bias in AI

Video

2.7 What would you do in case of bias?

Discussion

2.8 Dealing with bias in AI

Article

2.9 How do people in the field deal with bias?

Video

2.10 Do you understand what trustworthy AI is?

Quiz

Explainable AI

Clinical Products and Services using AI

Concluding Week 2

WEEK 3

Ethical and social aspects of AI in healt...

WEEK 4

Practical examples and wrap-up

WEEK 1  
Potential and limitations of AI in health... >

WEEK 2  
Tackling the technical and regulatory c... >

Introduction Week 2 >

Trustworthy AI >

2.4 What do you consider to be trustworthy AI?  
Discussion

2.5 European approach to trustworthy AI  
Article

2.6 Bias in AI  
Video

2.7 What would you do in case of bias?  
Discussion

2.8 Dealing with bias in AI  
Article

2.9 How do people in the field deal with bias?  
Video

2.10 Do you understand what trustworthy AI is?  
Quiz

Explainable AI >

Clinical Products and Services using AI >

Concluding Week 2 >

WEEK 3  
Ethical and social aspects of AI in healt... >

WEEK 4  
Practical examples and wrap-up >



Trust

© Possessed Photography via Unsplash.

# What do you consider to be trustworthy AI?

62 comments

In the previous step, we introduced the idea of trustworthy AI. Before explaining what this entails, we would like to hear what you think it means.

What do you consider to be trustworthy AI? When would you be able to trust an AI system, and when would you not? What do you think is the key difference between the two? Leave your ideas in the discussion section and explore this topic with fellow learners.

© AIProHealth Project

62 comments

Discussion



Elena Sügis Lead Educator

Add a comment... (plain text only, links will be auto-linked)

juhis

vastus

Arutelufoorumid

< Previous

✓ Mark as complete

Next >

Support



## 148 comments

Did you agree with others, or do you seem to have different ideas on what artificial intelligence is? Please share your observations in the discussion section.






**Which words come to mind when you think of Artificial Intelligence (AI)? (enter one word at a time)**

You have responded 5 times

🚫 This question is anonymous. No names will be tracked.

Enter a response

Submit

algorithmas	
data	
neural networks	
mächine learning	
automation	

Next >

<

WEEK 1

Potential and limitations of AI in health...>

Introduction to the course>

What is artificial intelligence?>

1.3 What is artificial intelligence according to you? Discussion

1.4 AI in real life Video

1.5 What is (not) AI? Video

1.6 History and definition of AI Article

1.7 Spot the AI Quiz

Technical background of AI>

Opportunities for AI in healthcare>

Limitations of AI>

Concluding Week 1>

WEEK 2

Tackling the technical and regulatory c...>

WEEK 3

Ethical and social aspects of AI in healt...>

WEEK 4

Practical examples and wrap-up>

# Kommenteerimisvõimalused

SHOW: All comments

SORT BY: Newest

JM

Jane Massawe Cyprian

Follow 20 APR

it's interesting how we use AI in our smart phones and other electronic gadgets in our daily life.

all comments are powerful and enlightening

Pin

Like

Reply

Bookmark

Report

RF

Richmond Fosu

Follow 30 MAR

AI can be used in diagnosing and operating patients of their diseases.

Pin

Like

Reply

Bookmark

Report

MR

Marcia Rocha

Follow 24 MAR

Had fairly good idea. Reading the comments bellow learned more about examples, thank you.

Pin

Like

Reply

Bookmark

Report

MG

Morris Gallas

Follow 15 MAR

dicision making, diagnostics, administration

Pin

Like

Reply

Bookmark

Report

NE

Noha El-Baz

Follow 20 FEB

diagnostics and prognostic models

Pin

Like

Reply

Bookmark

Report

mj

minu jose

Follow 11 FEB

AI can speed up diagnosing different conditions much quicker than now.Saves time thereby able to treat more people in less time.

< Previous

✓ Mark as complete

Next >

Support



WEEK 1  
Potential and limitations of AI in health...  
Introduction to the course  
What is artificial intelligence?  
1.3 What is artificial intelligence according to you?  
1.4 AI in real life  
1.5 What is (not) AI?  
1.6 History and definition of AI  
1.7 Spot the AI  
Technical background of AI  
Opportunities for AI in healthcare  
Limitations of AI  
Concluding Week 1  
WEEK 2  
Tackling the technical and regulatory c...  
WEEK 3  
Ethical and social aspects of AI in health...  
WEEK 4  
Practical examples and wrap-up

## Spot the AI



# Viktoriinid

### Question 3

Which application makes use of Artificial Intelligence?

- ☐ Ventilator supporting a patient's breathing during surgery
- ☒ Music recommendations on Spotify
- ☐ Functions in Photoshop that allow to adjust the contrast and brightness of a picture

Correct



Rosa Verhoeven Educator

Spotify offers personalized music recommendations based on the music you have played before and the data it has from similar users. It also uses audio models to figure out which type of music is more similar to each other. Finally, it's able to consider factors like the weather to offer music that fits the moment. This is all done with the use of machine learning.



WEEK 1 Open now

Potential and limitations of AI in h... >

Introduction to the course >

What is artificial intelligence? >

Technical background of AI >

Opportunities for AI in healthcare >

1.12 Which opportunities can you think of? Discussion

1.13 Potential of AI in healthcare Article

1.14 Examples of AI in healthcare Video

1.15 Will AI help you? Poll

1.16 AI solutions in use Video

Limitations of AI >

1.17 Limitations to the use of AI Article

1.18 What limitations do you see in your env... Discussion

1.19 Do you still think AI will help you? Poll

1.20 Questions about limitations of AI Quiz

Concluding Week 1 >

1.21 Summary of Week 1 Article

1.22 Week 1 test Test

WEEK 2 Opens on 25 May

Tackling the technical and regulato... >

WEEK 3 Opens on 1 Jun

Ethical and social aspects of AI in ... >

WEEK 4 Opens on 8 Jun

Practical examples and wrap-up >

## Will AI help you?

40 comments

By now, you should have gotten an idea of the potential of AI in healthcare. We have shown some practical examples and you have discussed other possible applications.

Now, we want to turn to your personal environment! If you are a healthcare professional, do you think artificial intelligence could be used in your daily tasks at work? If you are not working in healthcare, do you think artificial intelligence could be used to improve your health or to support diagnosis and treatment when you become a patient?

### Do you think that AI could help you in your work tasks or with your health?

- ☒ Yes, it can be very helpful
- ☐ It might be helpful in some tasks
- ☐ No, it cannot
- ☐ I am not sure

Skip to results

Submit vote

Please note: if you skip to results, you will not be able to vote.

40 comments

# Hääletused

< Previous

✓ Mark as complete

Next >

Support

- WEEK 1 Open now
- Potential and limitations of AI in h... ▾
- Introduction to the course >
- What is artificial intelligence? >
- Technical background of AI >
- Opportunities for AI in healthcare ▾

1.12 Which opportunities can you think of? Discussion

1.13 Potential of AI in healthcare Article

1.14 Examples of AI in healthcare Video

1.15 Will AI help you? Poll

1.16 AI solutions in use Video

Limitations of AI ▾

1.17 Limitations to the use of AI Article

1.18 What limitations do you see in your env... Discussion

1.19 Do you still think AI will help you? Poll

1.20 Questions about limitations of AI Quiz

Concluding Week 1 ▾

1.21 Summary of Week 1 Article

1.22 Week 1 test Test

WEEK 2 Opens on 25 May Tackling the technical and regulato... >

WEEK 3 Opens on 1 Jun Ethical and social aspects of AI in ... >

WEEK 4 Opens on 8 Jun Practical examples and wrap-up >

kursuse instruktori  
kommentaar/lisajuhis

## Do you think that AI could help you in your work tasks or with your health?

You selected Yes, it can be very helpful. See how your answer compares below.



Yes, it can be very helpful (73%)



It might be helpful in some tasks (25%)



No, it cannot (1%)



I am not sure (2%)



Rosa Verhoeven Educator

Many think AI can be helpful, although how is not always clear.

Please elaborate on your answer in the discussion section. What is your work, and how does or might artificial intelligence help you? Can you find others who are dealing with the same tasks that are or could be assisted by artificial intelligence? Or do you think artificial intelligence might not be able to help you, and why?

# Hääletused

Comments 0

We share all comments with the course team and their institution to help improve course content and for research purposes.

By posting a comment, you agree to the Code of Conduct. y, links will be auto-linked)

0/1200

Show: All comments Sort by: Newest

MT Myagmarnaran Tserendorj Follow 15 FEB

In my opinion, AI can classify and recognize medical records in short time.

Like Reply Bookmark Report

SA Sa'ad Abdullahi Follow 22 AUG

As an educator, I spend tremendous amount of my time grading homework and tests and I look forward to the possibility of AI-powered grading software that can grade essays, papers and tests in seconds. AI intervention is already making a quick work out of these tasks as machines are very close to being able to assess written responses.

Like Reply Bookmark Report

ED Els De Swardt Follow 25 JUL

AI can be helpful in optimizing diagnostics, pre-operative planning and during operations. (imaging + robotic surgery). (e.g. Teeth - Lung diseases - TKA- brain surgery). Diagnostics of Coronary Artery Disease. Defining optimal dosing of immunotherapy next to chemotherapy. AI may help in performing sensitivity analysis on Finite Elements Models based on scans.

Like Reply Bookmark Report

< Previous

✓ Mark as complete

Next >

Support

## WEEK 1

### Potential and limitations of AI in health...

- Introduction to the course >
- What is artificial intelligence? >
- Technical background of AI >
- Opportunities for AI in healthcare >
- Limitations of AI >
- Concluding Week 1 ✓

1.21 Summary of Week 1  
Article

1.22 **Week 1 test**

Test

## WEEK 2

- ### Tackling the technical and regulatory c...
- Introduction Week 2 >
  - Trustworthy AI >
  - Explainable AI >
  - Clinical Products and Services using AI >
  - Concluding Week 2 ✓

2.20 Summary of Week 2  
Article

2.21 **Week 2 test**

Test

## WEEK 3

- ### Ethical and social aspects of AI in healt...
- Introduction Week 3 >
  - Ethical concerns >
  - Dealing with ethical concerns >
  - Interaction between AI and healthcare profes... >
  - Patients interacting with AI >
  - Can we trust AI? >
  - Future perspectives >
  - Concluding Week 3 ✓

3.23 Summary of Week 3  
Article

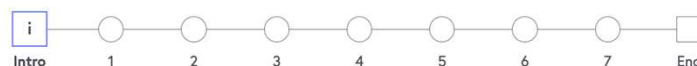
3.24 **Week 3 test**

Test

# Hindelised testid

Completed 7 steps in Week 1

## Week 1 test



## Digitunnistus



**Begin test**

### Test rules and grading

- You may take 3 attempts to answer each question and the test is not timed
- Each question has 3 points available
- A point will be deducted for each incorrect attempt
- You can review your total score for the test at the end
- If you want to receive a Certificate of Achievement for this course you need to attempt all test questions and achieve an overall course score of at least 70%
- You also need to mark at least 90% of steps on this course as complete
- If you score below the 70% required for a certificate on this course, please email [support@futurelearn.com](mailto:support@futurelearn.com) with the name of this course and your request to have your score reset.

# Edusammude jälgimine

☒ To do ☐ Conversations ☐ Progress



Hi Elena , here's the last step you visited:

Continue

1.4 AI in real life VIDEO (02:04)

## Using FutureLearn

Need help using FutureLearn? We've put together a [help page](#) with all the information you need to get the most out of FutureLearn.

### Week 1: Potential and limitations of AI in healthcare

#### Introduction to the course

This activity introduces the course How Artificial Intelligence Can Support Healthcare. The course outline and learning objectives are described and the educators are introduced.



1.1 Welcome to the course ARTICLE

1.2 Introduction DISCUSSION

#### What is artificial intelligence?

In this activity, learners will see examples of AI in real life, learn how it works, and practice to distinguish AI from non-AI systems.



☐ To do ☐ Conversations ☒ Progress

## How to complete this course

To earn a certificate on this course, you need to mark at least 90% of steps as complete, and have an overall course score of at least 70%.

### Your progress



#### 1.22 Week 1 test 0

This is a test step, it helps you verify your understanding. If you want to earn a Certificate of Achievement on this course you need to complete this test and any others, scoring an average of 70% or above.

Find out more

#### 2.21 Week 2 test 0

This is a test step, it helps you verify your understanding. If you want to earn a Certificate of Achievement on this course you need to complete this test and any others, scoring an average of 70% or above.

Find out more

#### 3.24 Week 3 test 0

This is a test step, it helps you verify your understanding. If you want to earn a Certificate of Achievement on this course you need to complete this test and any others, scoring an average of 70% or above.

Find out more

WEEK 1  
Potential and limitations of AI in health...  
Introduction to the course  
What is artificial intelligence?  
1.3 What is artificial intelligence according to you?  
1.4 AI in real life  
1.5 What is (not) AI?  
1.6 History and definition of AI  
1.7 Spot the AI  
Technical background of AI  
Opportunities for AI in healthcare  
Limitations of AI  
Concluding Week 1  
WEEK 2  
Tackling the technical and regulatory c...  
WEEK 3  
Ethical and social aspects of AI in health...  
WEEK 4  
Practical examples and wrap-up

Tagasiside  
vastuse kohta

## Spot the AI



### Question 3

Which application makes use of Artificial Intelligence?

- ☐ Ventilator supporting a patient's breathing during surgery
- ☒ Music recommendations on Spotify
- ☐ Functions in Photoshop that allow to adjust the contrast and brightness of a picture

### Correct



Rosa Verhoeven Educator

Spotify offers personalized music recommendations based on the music you have played before and the data it has from similar users. It also uses audio models to figure out which type of music is more similar to each other. Finally, it's able to consider factors like the weather to offer music that fits the moment. This is all done with the use of machine learning.

# Viktoriinid

- WEEK 1
- Potential and limitations of AI in health... >
- Introduction to the course >
- What is artificial intelligence? >
- 1.3 What is artificial intelligence according to you? Discussion
- 1.4 AI in real life Video
- 1.5 What is (not) AI? Video
- 1.6 History and definition of AI Article
- 1.7 Spot the AI Quiz
- Technical background of AI >
- Opportunities for AI in healthcare >
- Limitations of AI >
- Concluding Week 1 >



Brainstorming

© Fauxels via Pexels

## What is artificial intelligence according to you?

148 comments

Before explaining what artificial intelligence is and how it works, we would like to know what comes to mind when you think about artificial intelligence.

We invite you to please enter a maximum of three words [here](#).

**Note:** if you would like to add a multiple words response, you can do this as follows: `multiple_words_response`.

Once you have entered the words, you can click [here](#) to see a word cloud of the words that have been entered by you and fellow learners. The bigger the word, the more people mentioned it!

Did you agree with others, or do you seem to have different ideas on what artificial intelligence is? Please share your observations in the discussion section.

arutelud kaasõppijatega  
ja  
sisemine dialoog ja refleksioon



✓ Step completed

Next >

Support

Next >

Support



# Õppematerjalid ja tegevused hoiavad õppijat aktiivselt kaasatuna



Videoloengud

Artiklid

Arutelud

Hääletused  
Küsimustikud  
Viktoriinid  
Testid

Kommentaariid

(õppejõud ja  
külaliseksperdid )

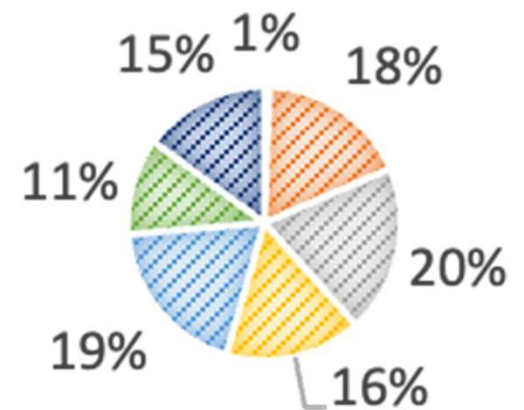
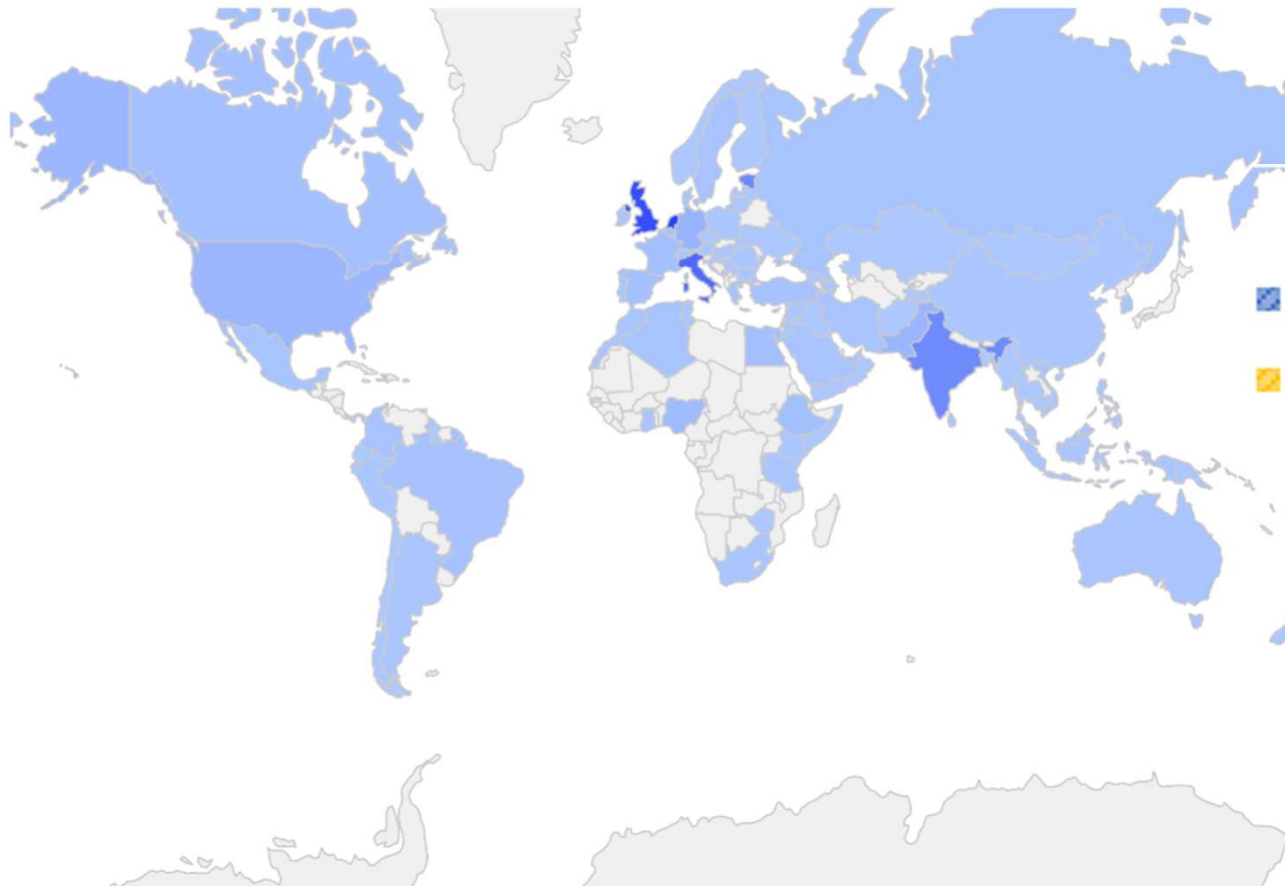
(tavaliselt küsimust  
esitatakse  
teema alguses)

(sh personaalse  
tagasisidega  
õppejõudude  
poolt )

# Kursusel osalejad

>2000 õppijat

VANUSE JAOTUS





# Tagasiside

## Did this course meet your expectations?

Responses (69)



## Did you gain new knowledge or skills by taking the course?

Responses (69)



## Since starting the course, have you shared what you learned with other people?

Responses (67)



07/01/22

### Great course about AI in healthcare

The course was easy to follow, with clear video material and insightful articles. I learned a lot. I highly recommended everybody to follow this course

Share

Was this review helpful? 0 0



27/12/21

### Excellent course, super nice tutors.

The course was perfect in every aspect. The contents were highly practical and relevant set on this emerging field of science.

Share

Was this review helpful? 0 0



26/12/21

### Great Chance to get into the mindset

With an approach of 16 h of planned education you get an excellent overview of the topic and a very practically driven approach of getting things done without seeing the obstacles of AI in medicine.

Especially the different views of all the actors in this field from research and data modelling, the legal issues and the management necessit...[Read More](#)

Share

Was this review helpful? 0 0



22/12/21

### AI in Healthcare

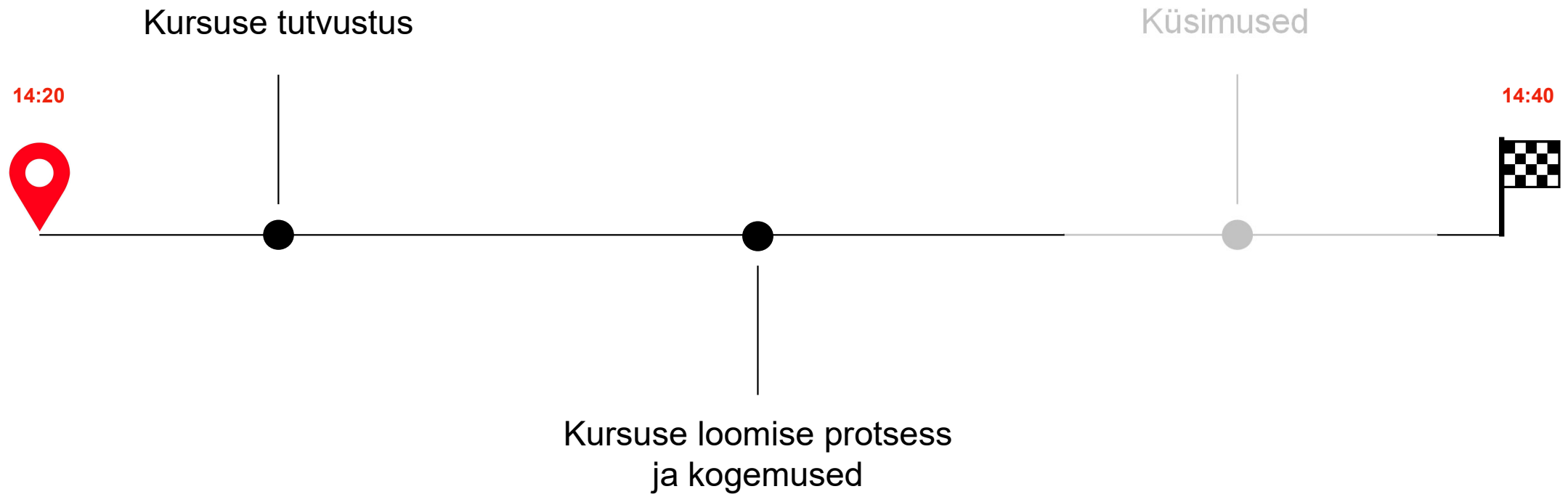
The content was very interesting with a good balans between theoretic knowledge, clinic examples and interaction with the group

Share

Was this review helpful? 0 0



# Teemad



# 30% OFF

your first two months!

Enjoy Unlimited online courses – start your subscription for only €35.99 €24.99.

Explore courses

New subscribers only. T&Cs apply. See [checkout](#) for more details.

CIPD



KING'S  
College  
LONDON



UCL

University  
of Glasgow



CAMBRIDGE

NHS  
Health Education England

accenture

institut  
FRANÇAIS  
de la  
MODE

UNIVERSITY OF LEEDS

BLOOMSBURY

Coventry  
University

## FutureLearn Unlimited

Subscribe now for limitless learning, whenever and wherever suits you.

Earn CV-ready certificates, learn at your own pace and get long-term access to thousands of high-quality short courses.

Learn more

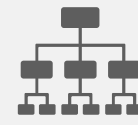
### Unlimited Monthly

- ✓ Limitless short courses\*
- ✓ CV-boosting certificates
- ✓ Flexible learning

NEW! €35.99 €24.99  
for the first two months

Subscribe to Unlimited

# Õppematerjalid ja tegevused



Videoloengud

Artiklid

Arutelud

Hääletused  
Küsimustikud  
Viktoriinid  
Testid

Kommentaarid

Parallelsed  
kursuse harud

Koodi  
kirjutamise  
ülesanded

(õppejõud ja  
külaliseksperdid )

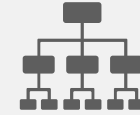
(tavaliselt küsimust  
esitatakse  
teema alguses)

(sh personaalse  
tagasisidega  
õppejõudude  
poolt )

(nt eesti keeles)



# Õppematerjalid ja tegevused



Videoloengud

Artiklid

Arutelud

Hääletused  
Küsimustikud  
Viktoriinid  
Testid

Kommentaarid

Parallelsed  
kursuse harud

Koodi  
kirjutamise  
ülesanded

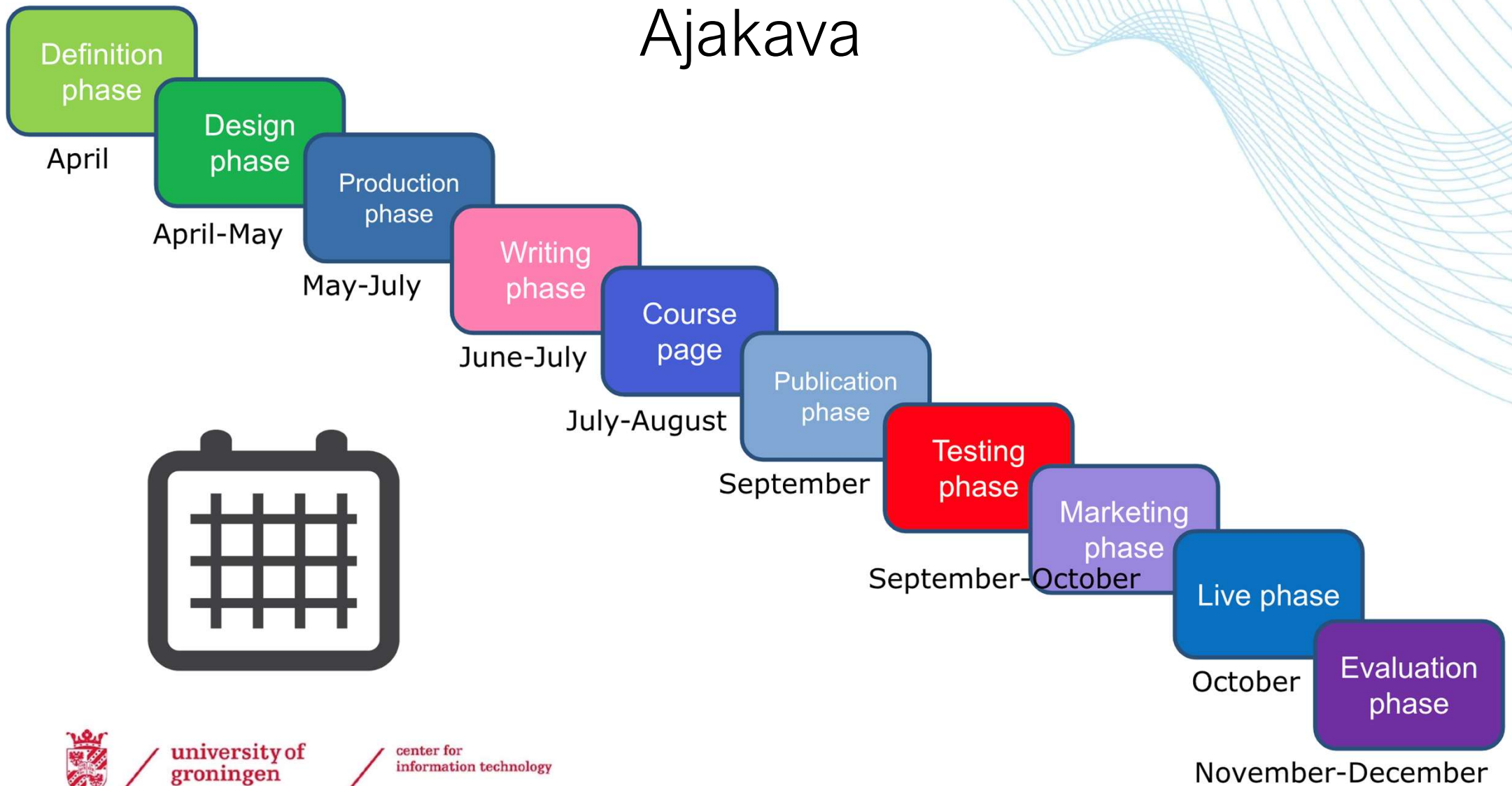
(õppejõud ja  
külaliseksperdid )

(tavaliselt küsimust  
esitatakse  
teema alguses)

(sh personaalse  
tagasisidega  
õppejõudude  
poolt )

(nt eesti keeles)

# Ajakava



university of  
 groningen

center for  
 information technology



# Kursuse planeerimine



## Step-by-step design

This document sets up the actual design of the course. For now we select and briefly describe the flow of the course by formulating the actual steps and activities (=group of steps within a week). The actual texts and scripts will be produced during the next phases.

### Learning objectives

[add the learning objectives from the course plan here]

### Big questions

[add the big questions from the course plan here]

### Step-by-step design

These are the step types you can choose from:

Telling stories / content steps	Provoking conversation	Celebrating progress
Article step	Discussion step	Quiz step
Video step	Poll step	Test step
Audio step	Exercise step or external tools	Peer Review

These are the learning types to choose from:

Learning type	Description
---------------	-------------

## Week by week planning

**Design notes:** Week 1 is crucial for getting learners engaged with the course and the content. In Week 1 the learner should:

- get to know the educator/s and the course structure
- try some of the common features e.g. do a short quiz, get involved in a social activity
- set themselves some challenges and goals
- begin to prioritise where they might put their effort

Each week should have an obvious goal and the week's activities should feel coherent. It is a good idea to end each week with a summary of the week that encourages reflection on what's been learnt and/or a preview of the following week.



Read, watch, listen	Learners watch video, listen to audio, review images and diagrams, watch animations and read text or short articles.
Discuss	Learning through conversation. All steps in a course lead to conversation through commenting and social interaction.
Investigate	Guiding the learner to explore, compare and critique the concepts and ideas being taught.
Practise	Enable the learner to adapt their actions to the task and use peer feedback and reflection to improve their next action.
Collaborate	Learners work together to search for understanding, meaning and solutions or to demonstrate their learning by creating something
Produce	Production enables learners to consolidate their learning by creating real outputs using their current knowledge
Assessment	Assessment enables learners to consolidate their learning by creating real outputs using their current knowledge

## Tegevuse tüüp

# Nädala tegevuste planeerimine

Vastav detailne **storyboard**

## Step 2.6 Tease nädala **tegevus** 2.6

Video	
Title	50 characters , ideally
Bias in AI	
Short description	max 150 characters
Display of a situation in which bias in AI occurred.	
Body text	1-2 paragraphs
<p>One of the seven requirements for reaching trustworthy AI is the application of diversity, non-discrimination, and fairness. In order to meet this requirement, bias should be avoided.</p> <p>In this video, educator [Elena Sügis](https://www.futurelearn.com/profiles/17264375) introduces the topic of bias and displays the results of a study in which the effects of bias were examined.</p> <p>© AIProHealth Project</p>	

### Storyboard Template

		Title slide [Bias in AI]	followed by title slide Groningen logo top left
12	<p>A central motivation for using AI systems in healthcare is to</p> <ul style="list-style-type: none"> <li>advance patient care by reducing human error and</li> <li>to improve the accuracy of diagnosis and clinical decisions.</li> </ul> <p>There is, however, also increasing awareness about bias in AI technologies and the potentially harmful effects.</p>	Elena speaks to the camera	<p>bullet points appear</p> <ul style="list-style-type: none"> <li>advance patient care by reducing human error</li> <li>improve the accuracy of diagnosis and clinical decisions</li> </ul>
2	It is important to mention at this point that strictly speaking biases in AI are not only caused by technical problems that can be solved by technological means. It has been also shown that human bias, such as gender and racial bias, can be inherited by AI systems.	Elena speaks to the camera	
3	For example, face recognition systems have been shown to misclassify darker-skinned females exhibiting gender and ethnicity bias.	voice over	<p><a href="https://www.storyblocks.com/images/stock/carbon-blue-gear-havgpsf4muwi6gl5uff">https://www.storyblocks.com/images/stock/carbon-blue-gear-havgpsf4muwi6gl5uff</a></p> <p>+ red cross</p> <p><a href="https://www.storyblocks.com/images/stock/young-african-british-woman-in-the-woods-s3xbm-cjfdkhfsbp3x">https://www.storyblocks.com/images/stock/young-african-british-woman-in-the-woods-s3xbm-cjfdkhfsbp3x</a></p> <p>+ <a href="https://www.storyblocks.com/images/stock/beautiful-af">https://www.storyblocks.com/images/stock/beautiful-af</a></p>

# Väljakutsed



Tom  
Spits

- **Koordineerimine**
- Tähtajad
- Intervjuud ekspertidega
- Filmimine erinevates kohtades



# Tänu sõnad



TARTU ÜLIKOO  
arvutiteaduse instituut



Peter  
Van Ooijen



Laurène  
Ramos Martins



Rosa  
Verhoeven



Stefan  
Phillips



Tom  
Spits



Bart  
Scheerder



Jaak  
Vilo



Anna  
Leontjeva



Raivo  
Kolde



Marianna  
Laht



Mirjam  
Paales



# How Artificial Intelligence Can Support Healthcare

<https://www.futurelearn.com/courses/how-artificial-intelligence-can-support-healthcare>



# Teemad

